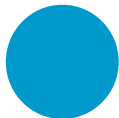
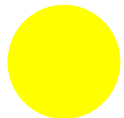


WELCOME!

Please sit at a table with the
**same color as the sticker on
your badge.**

Introduce yourself to tablemates!



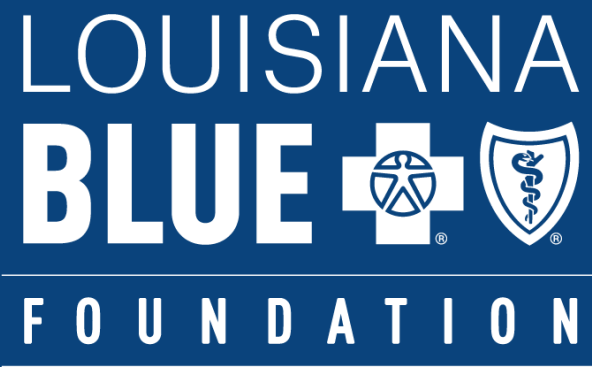
The poster features the Louisiana Foundation logo at the top, which includes a cross and a shield. Below the logo, the text "2025 ANNUAL CONVENINGS" is displayed in large, bold letters. A large, ornate map of Louisiana is shown on the left side, featuring a fleur-de-lis in the center. To the right of the map, the dates and locations for the events are listed: "FEBRUARY 06 LAKE CHARLES", "13 RUSTON", "20 METAIRIE", and "27 BATON ROUGE". At the bottom right, the registration link "BCBSLAFOUNDATION.ORG/REGISTER" is provided.

Louisiana
FOUNDATION

2025 ANNUAL CONVENINGS

FEBRUARY
06 LAKE CHARLES
13 RUSTON
20 METAIRIE
27 BATON ROUGE

BCBSLAFOUNDATION.ORG/REGISTER



Agenda

- 10 AM** | Arrival & Networking
- 10:15 AM** | Welcome & Introductions
- 11:00 AM** | Partner Bright Spots
- 12 PM** | Lunch/Networking Break
- 12:15 PM** | LDH Presentation/Lunch
- 1:00** | Collaboration Discussion
- 1:20 PM** | Louisiana Blue Resources
- 2:00 PM** | Closing Remarks



Community Partnerships

Community Relations & Blue Cross and Blue Shield of Louisiana Foundation





Our **Community Partnerships division** helps improve the health and lives of Louisianians by empowering everyday people to do extraordinary good in their communities:

- Our **Community Relations** team leverages the impact of corporate and employee giving.
- Our **Foundation** team makes grants to improve the social determinants of health.

Our Team

Michael Tipton

Foundation President | Head of Community Relations
michael.tipton@lablue.com

Katie Bergeron

Community Relations and Foundation Assistant
katie.bergeron@lablue.com

Karen Bolles

Operations Manager
karen.bolles@lablue.com

Kellie Duhon

Corporate Giving Manager
kellie.duhon@lablue.com

Tanja Foil

Foundation Initiatives Coordinator
tanja.foil@lablue.com

Ben Mahoney

Communications & Special Projects Manager
ben.mahoney@lablue.com

Diana Nguyen

Community Relations Assistant
diana.nguyen@lablue.com

Eleanor Simmons

Community Relations Assistant
eleanor.simmons@lablue.com

Natalie Wesley

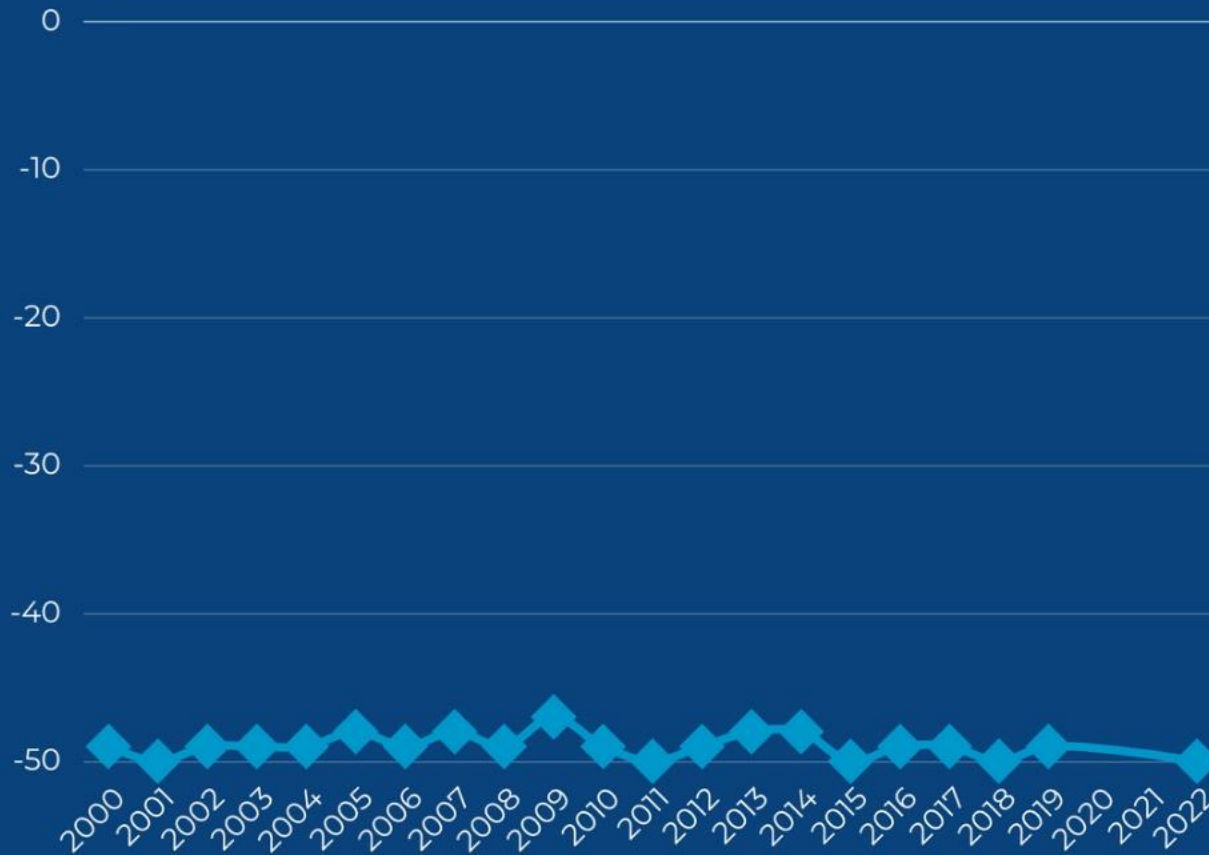
Employee Giving Manager
natalie.wesley@lablue.com

Chloé Wiley

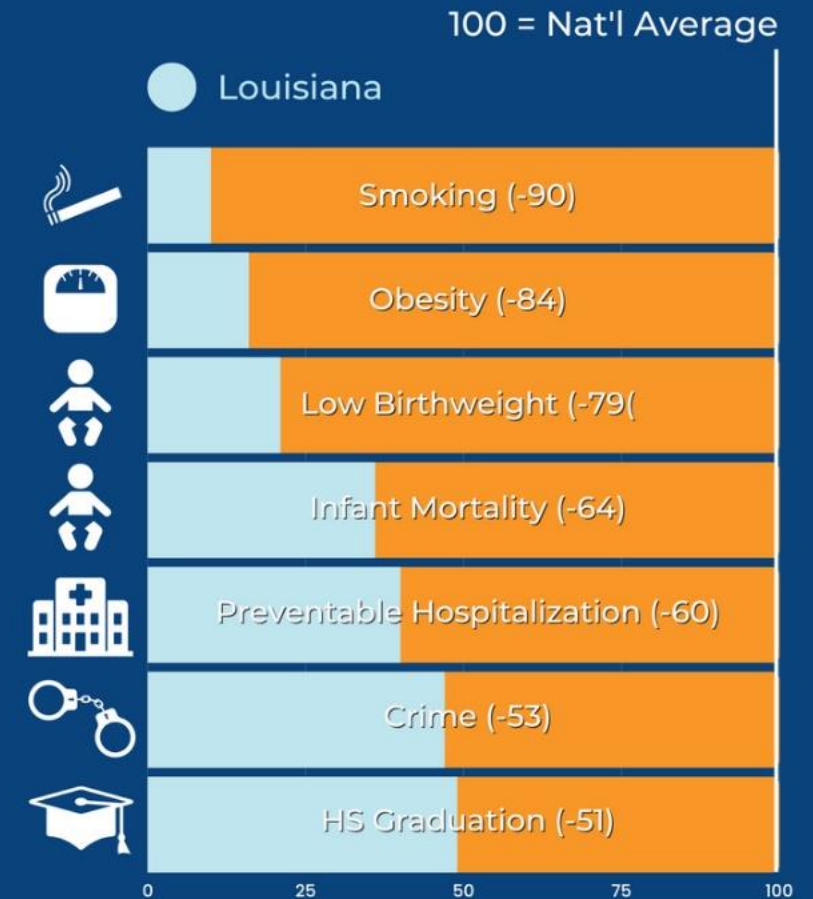
Foundation Initiatives Manager
chloe.wiley@lablue.com

Louisiana faces big and persistent challenges.

Overall Health Rankings



Lowest Core Measures



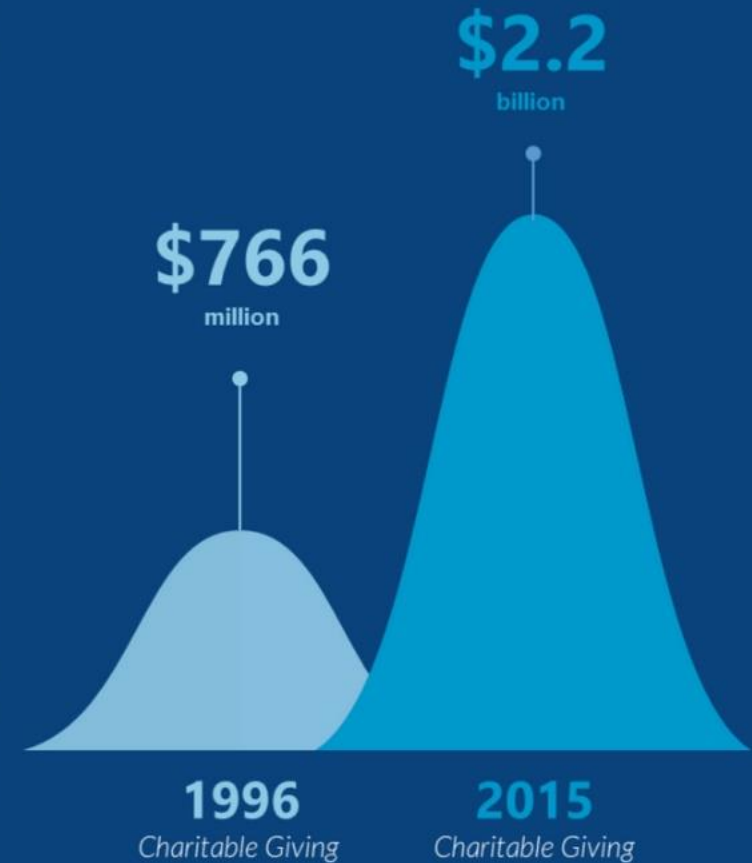
Spending more money isn't solving them.

Over the last 30 years, the amount of money flowing into Louisiana's nonprofits has tripled.

But outcomes in health and education remain consistently low, with Louisiana ranking 50th out of 50 for health outcomes year after year.



Currently:
50th out of 50
in health outcomes
-America's Health Rankings



The Social Determinants of Health



Logistics:

- **Good to know/folder review**
- **Wifi**
- **Presentation materials in follow up email**
- **Restrooms**
- **Coffee**
- **Questions**
- **Katie Bergeron ☺**

Say Hello!

Please introduce yourself:

- Name
- Organization
- Angel or grant partner?
- One sentence mission summary
- Land the plane!

**Land the
plane!**





Agenda

- 10 AM** | Arrival & Networking
- 10:15 AM** | Welcome & Introductions
- 11:00 AM** | Partner Bright Spots
- 12 PM** | Lunch/Networking Break
- 12:15 PM** | LDH Presentation/Lunch
- 1:00** | Collaboration Discussion
- 1:20 PM** | Louisiana Blue Resources
- 2:00 PM** | Closing Remarks